

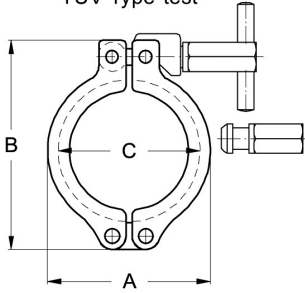
Clamp pipe connection DIN 32676, flange Ø 34–319

Art.Nr. EUR Art.Nr. EUR

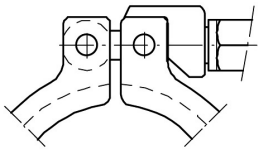
Clamping ring FL-Stabil, 25-115 safety catch

DN	A	B	C	Ø Flange	AISI304 Hexagonal nut		AISI304 Toggle	
					Art.Nr.	EUR	Art.Nr.	EUR
25-40	64,5	87	54,5	50,5	211316	Enquiry	211516	Enquiry
50	78	100,5	68	64	211305	Enquiry	211505	Enquiry
2,5"	91,5	115	81,5	77,5	211306	Enquiry	211506	Enquiry
65	105	129,5	95	91	211307	Enquiry	211507	Enquiry
80	120	145,5	110	106	211338	Enquiry	211538	Enquiry
100	133	159,5	123	119	211308	Enquiry	211508	Enquiry
115	144	171	134	130	211309	Enquiry	211509	Enquiry

TÜV Bauteilprüfung
TÜV Type-test



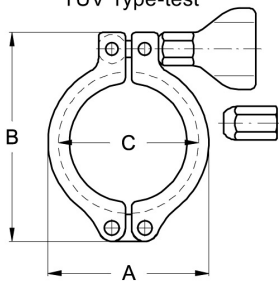
Verschluss
Catch



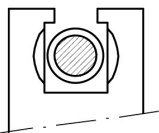
Clamping ring FL-Stabil, 10, 125-300 safety catch

DN	A	B	C	Ø Flange	AISI304 Hexagonal nut		AISI304 Wing nut	
					Art.Nr.	EUR	Art.Nr.	EUR
10-20	44	62	37	34	211360	Enquiry	211560	Enquiry
125	175	215	159	155	211310	Enquiry	211510	Enquiry
150	203	243	187	183	211311	Enquiry	211511	Enquiry
200	253,5	295,5	237,5	233,5	211312	Enquiry	211512	Enquiry
250	291	344,5	272	268	211346	Enquiry	211546	Enquiry
300	342	399,5	323	319	211348	Enquiry	211548	Enquiry

TÜV Bauteilprüfung
TÜV Type-test



Verschluss
Catch



DN 200, DN 250, DN 300
Gelenk nachstellbar.
Hinge adjustable.

